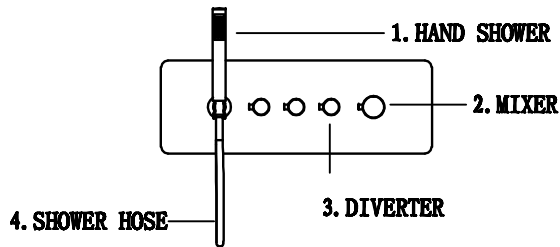
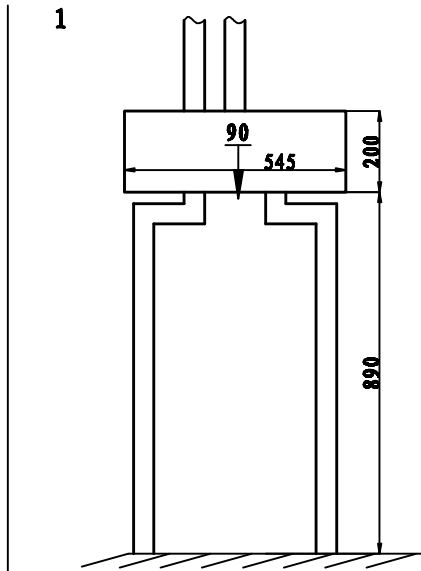


LTA1008

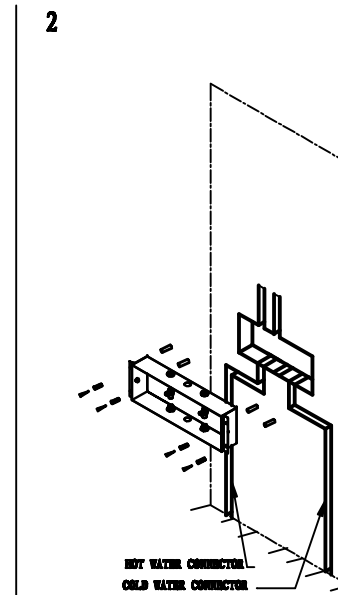
INSTALLATION MANUAL



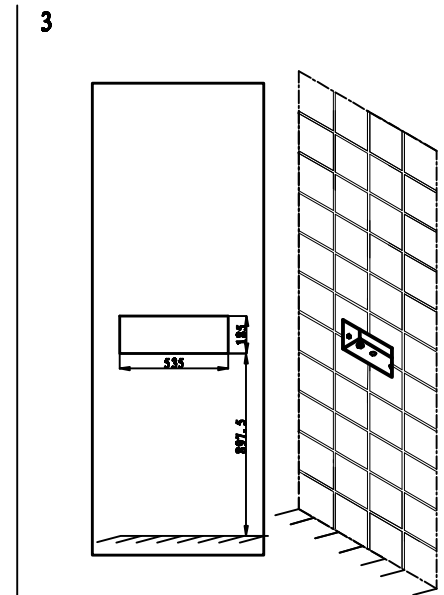
TOOLS



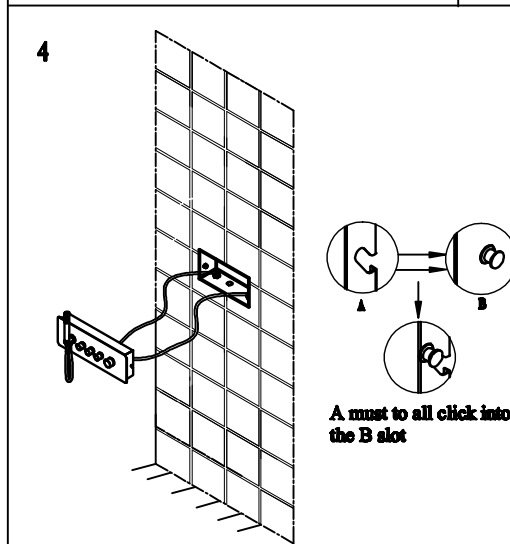
△ First carved a rectangular slot (L545mm*W200mm*H90mm) in the wall that 890 mm high from the ground and two inlet water pipeline



△ Put the concealed box into the slot on the wall, and fixed with the screws (no slipping, no loosening).



△ Linked the hot and cold water pipes, then tighten the screws (Attention: Filter washer must be installed to avoid dirt clogging), finally, paste up the tiles as the picture shows.



A must to all click into the B slot

△ Link the hot and cold water pipes accurately (please clean up the foreign body of connecting pipes before installation, and hang up the preassembled panel components in accordance with the picture shows (A must to all click into the B slot).

5 Notes:

1. Reasonable use of this product by technical parameters.
2. The product temperature control valve is automatic thermostatic valve, will not be affected by the temperature change under normal use. Any of the following circumstances may affect the use:

A. Low water pressure. B. Hot water inlet temperature is lower than 38 degrees. C. Cold water temperature is too low. D. Used with the gas water heater (May appear the phenomenon of flame).

Special note: If the cold water pipe suddenly anhydrous, the thermostatic valve will automatically switch to stop the water, avoid the hot to bodily harm.

For a more rational use of this product.

Here recommended the storage-type electric water heater.

Maintenance considerations:

1. After the installation, please dredge it with cold water and repeat opening and closing to make sure the installation meets the requirements and no irregularities, then use the hot water.
2. Only allows to use soft cloth to clean the water stains and dirt on the surface of the panel.
3. Not use any acidic or alkaline cleaners or will corrode the surface.
4. While the water is highly contaminated, please stop using to avoid plugging the water hole.
5. If you encounter a small shower water, please clean the filter gasket of the inlet valve.

